



**Sustainable  
Healthcare  
Coalition**

Un exemple d'action concrète

**Les inhalateurs en GB**

Sonia Roschnik, Sustainable Healthcare Coalition

# Core to our business is a 'value chain' approach

What do we mean by that?



## Purchased goods and services

The sourcing of the raw materials GSK buys from other companies.

## GSK's operations

The impacts of what we do in our labs, factories and offices.

## Logistics

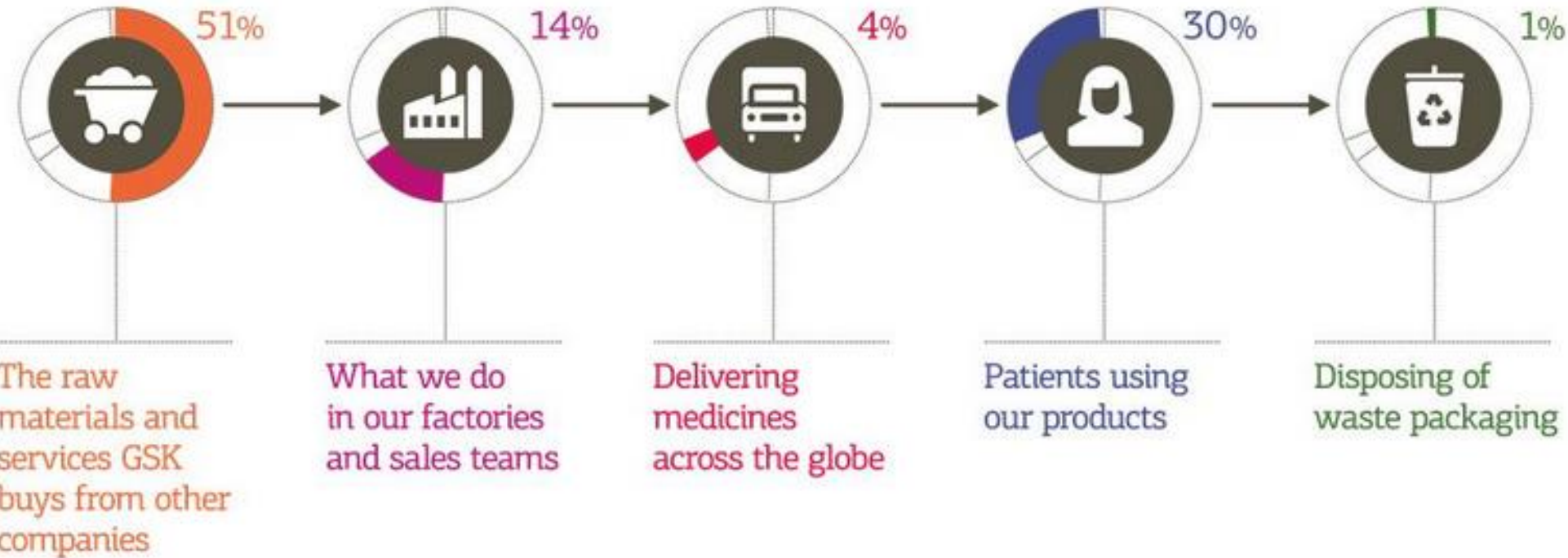
Delivering medicines, vaccines and consumer health products across the globe.

## Use of our products

Patients and consumers using our products.

## Disposal

The disposal of our products by GSK, patients and consumers.



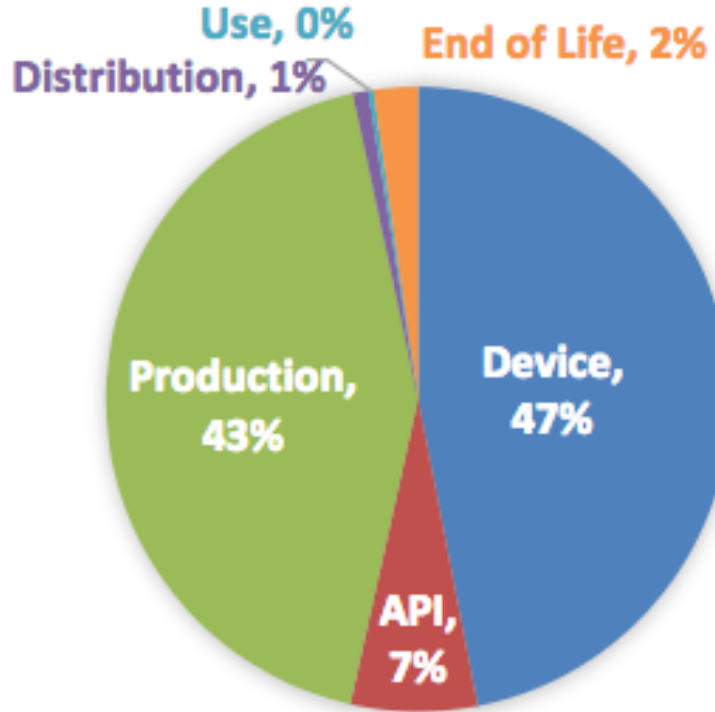
Source : GSK

**Product Category: Asthma and COPD Treatment**

Product	Stock Keeping Unit	Geographic Area	Net CO <sub>2</sub> e not rounded	Net CO <sub>2</sub> e rounded	Functional Unit
Treatment for Chronic Obstructive Pulmonary Disease (COPD)	Relvar / Breo 92/22 in the Ellipta Device	United Kingdom	764.66	750	gCO <sub>2</sub> per unit
			764.66	750	gCO <sub>2</sub> per 30 day treatment
			25.50	26	gCO <sub>2</sub> per actuation
			25.50	26	gCO <sub>2</sub> per dose
			25.50	26	gCO <sub>2</sub> per day
	Seretide 50/500 Accuhaler (Diskus) Device	United Kingdom	1.25	1.3	kgCO <sub>2</sub> per unit
			1.25	1.3	kgCO <sub>2</sub> per 30 day treatment
			20.86	20	gCO <sub>2</sub> per actuation
			20.86	20	gCO <sub>2</sub> per dose
			39.68	40	gCO <sub>2</sub> per day
Treatment for Asthma	Seretide 25/250 Metered Dose Inhaler (MDI)	United Kingdom	20.37	20	kgCO <sub>2</sub> per unit
			20.37	20	kgCO <sub>2</sub> per 30 day treatment
			169.73	170	gCO <sub>2</sub> per actuation
			339.46	340	gCO <sub>2</sub> per dose
			678.52	700	gCO <sub>2</sub> per day

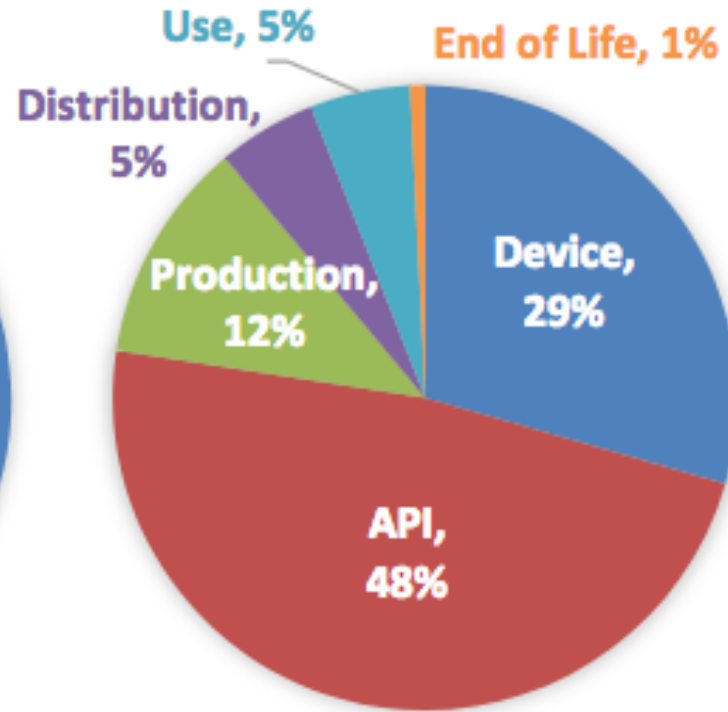
Source : Carbon Trust

### Relvar 92/22



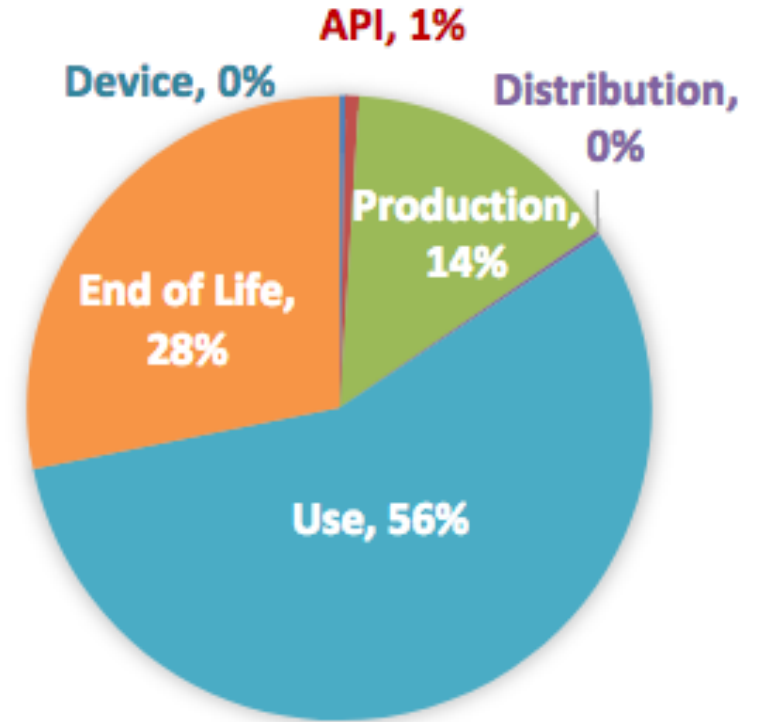
0.75 kgCO<sub>2e</sub>  
per 30 day treatment

### Seretide 50/500 Accuhaler



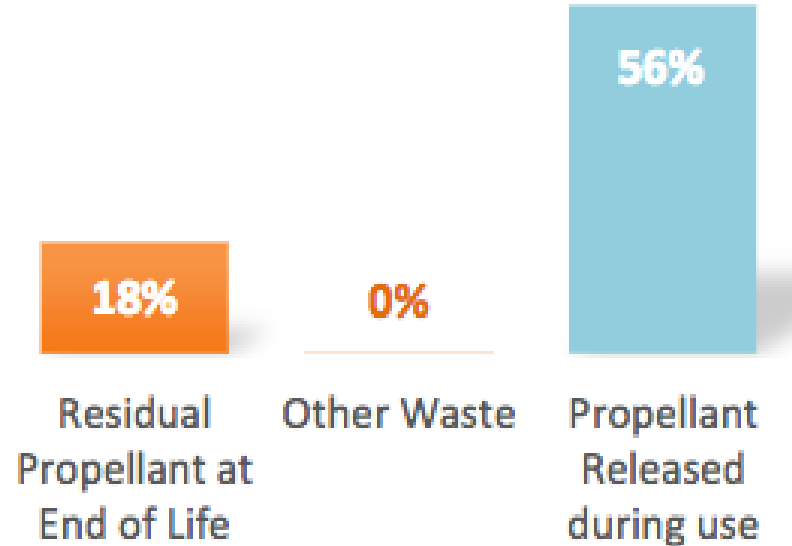
1.25 kgCO<sub>2e</sub>  
per 30 day treatment

### Seretide 25/250 MDI



20 kgCO<sub>2e</sub>  
per 30 day treatment

### *Largest Contributors to the Seretide 25/250 MDI Carbon Footprint*



Over three quarters of the emissions associated with the full life cycle of the Seretide 25/250 MDI product are a result of the release of HFC – 134a gas which is used as a propellant. This release occurs both during **use** of the product (56% of the total carbon footprint) and at **end of life** when the product is disposed of (18% of total carbon footprint).

Source : Carbon Trust

# Recyclage d'inhalateurs en GB

Premiers essais en GB en 2010/2011 – ou 73 Millions de tonnes d'inhalateurs sont utilisées chaque année

63% de la population jettent leur inhalateurs dans des poubelles ordinaires

512000 tonnes de carbone pourraient être économisées en les recyclant

75% de la population est maintenant couverte par cette possibilité

Travaillent avec les pharmacies et les pharmaciens pour encourager le recyclage

D'autres pays sont inclus: Australie, Hongrie, Chile

# Autres possibilités d'action

- Scandinavie: Aucune utilisation de gas pour propulser les inhalateurs, utilisant des bronchio dilatateurs uniquement sous forme de poudre
- Stockholm: Liste de substitution pour les produits ayant le plus d'impacts environnementaux - cette démarche est incluse dans le certificat de qualité des professionnels et des services de Sante
- Union Européenne: Evolution et recherche pour une Chimie "verte"
- NICE: Utilisation de médicaments de façon prudente et prévoyante



**Sustainable  
Healthcare  
Coalition**

# MERCI!

Sonia Roschnik, Sustainable Healthcare Coalition

[sonia.sustainablehealth@gmail.com](mailto:sonia.sustainablehealth@gmail.com)